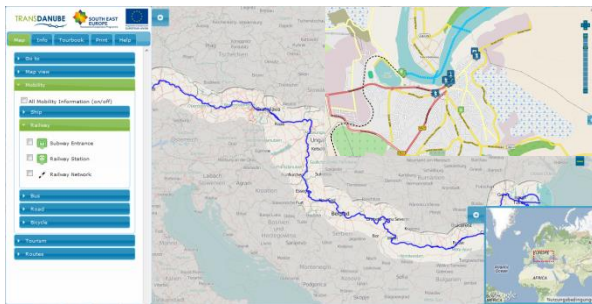


Factsheet Interactive Map

Tourism and mobility information system

The interactive map developed in the Transdanube project covers the whole Danube river from the source to the Delta with a buffer zone of around 75 km to both sides of the Danube. The map combines information on tourism highlights with that on soft mobility offers. It enables the user to plan his trip along the Danube using ship, train, bus or bike with a simple mouse click.



Thereby, the priority is an easy and user-friendly intuitive navigation as well as good functionality of the map using the standard functions as zooming, panning, printing etc. The map reflects the communication guidelines of the Transdanube project using colours and logo. The standard background map is OpenStreetMap, but the user is able to switch between different map layers. Currently, the map is available in English. The integration of other languages is foreseen. The map can be used on mobile device and be embedded into external websites via permalink and/or iframe.

Open Source as basis

The Open Source idea is the basis for the development of the map. Both, hardware and software, like operating system, GIS components and web-application software are based on open source. All users have licence free access to software packages, data libraries and server. This enables open data exchange with all cooperation partners.

What you find on the map

The traveller can find information on tourism points of interest (POIs) and mobility offers on the map.

The tourism POIs are divided into different categories ranging from attractions, museums, monuments, castles, information to viewpoints. Each category is shown with a different pictogram which can be individually selected to

be shown on the map. By clicking on a POI the information area will be opened, where the user finds a photo, a description of the POI together with the address and a weblink. In addition to this, the user is offered information from Wikipedia on further points of interest in the surrounding of the selected POI. Automatically, the nearest mobility offers (train station, bus stop and taxi stand) are shown in the information window, so that the traveller can easily find the next opportunity to get along or to travel in the destination.

The mobility information is divided in the following categories, shown with individual green pictograms on the map: ship (ferry routes, kayaking), railway (station, subway, railway network), bus (stations), road (car sharing, taxi) and bicycle (bicycle rental, E-bike charging). The map provides links to the timetables of the operating regional and national public transport providers. Further on, the user can perform a routing that shows what type of public transport is available, how long it takes and gives a link to the timetables of the correspondent provider.

Where useful information is clustered. All information on the map can be rated by the user with a standard rating system (top, average, not so good, not available).

Joint data management

The data will be made available through different sources: From the project partners, OpenStreetMap and from cooperation partners, e.g. via standard interfaces. For data administration an easy to use POI editing tool was established, where all project partners are able to login for editing and administrating data in their region. To simplify data upload an upload manager was designed that enables quick and easy integration of data packages in .gpx and .xls format.

Plan your trip along the Danube!

An integrated tourbook allows the user to follow his steps through the map and save and print the collected information. Map details, link list to the transport providers, POIs and the related information can be added to the tourbook.

www.danubetour.eu
www.donautour.eu