

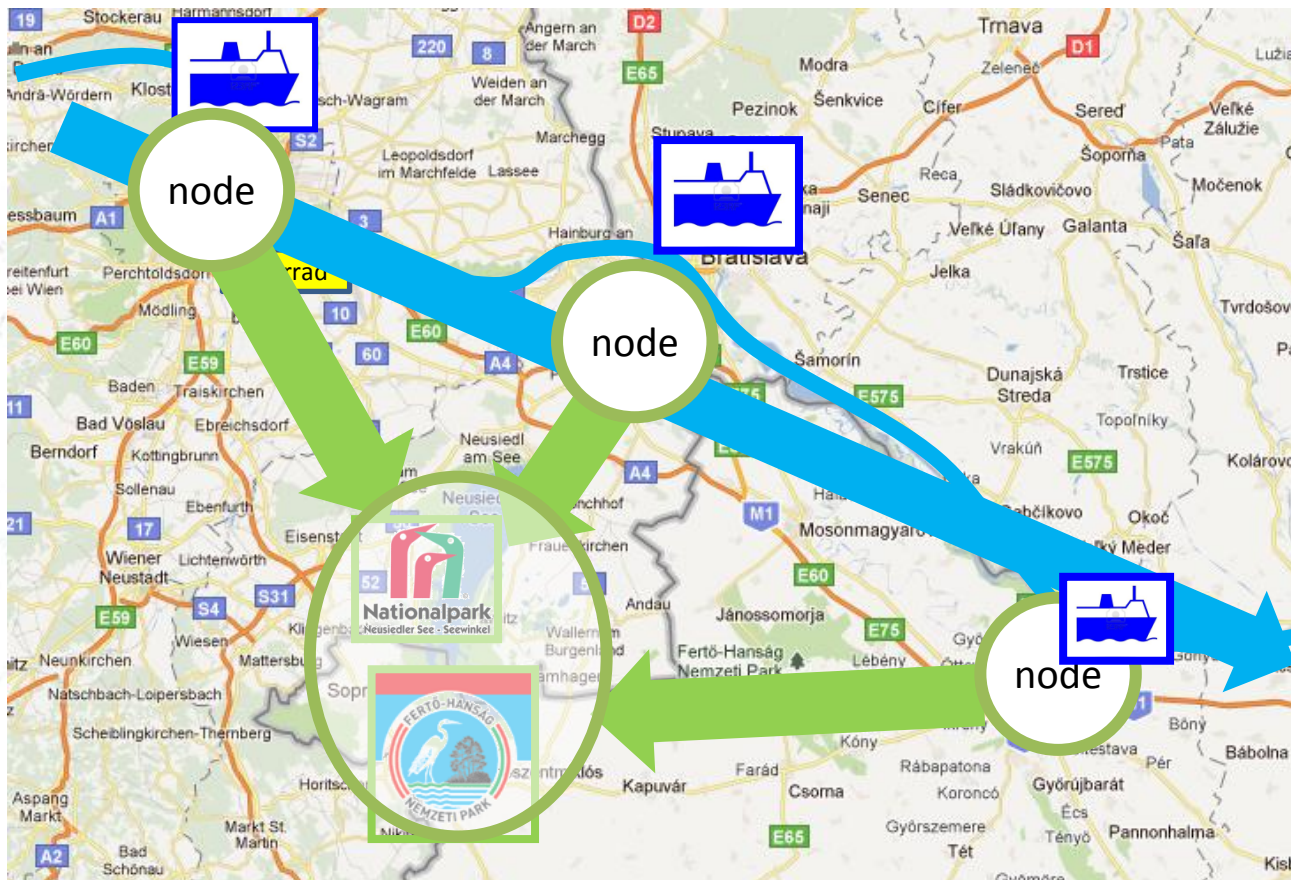
TRANSDANUBE

WP 4 - Sustainable mobility offers + demonstration

Kick-Off-Meeting

Vienna, Dec. 10 – 12, 2012

Development of “Sustainable Mobility” along the Danube including train, bus, bike and shipping traffic to improve accessibility and facilitate the concept of sustainable tourism in the whole Danube region.



WP 4 - Activities

| | | | |
|------------|--|--|------------|
| WP4 | Sustainable mobility offers + demonstration | Soft mobility vision & regional action plans | 4.1 |
| | | Sustainable transport offers | 4.2 |
| | | Manuals | 4.3 |

Jointly for our common future

Act. 4.2 - Sustainable transport offers



| PP2: Improve rail connection between the Danube in Bratislava and Neusiedl (NP) |
|---|
| |
| |
| |
| |
| |
| |
| |
| |
| |

Examples from TRANSDANUBE Application Form

Jointly for our common future

Act. 4.2 - Sustainable transport offers



PP2: Connect touristic attractions with bus-service

Examples from TRANSDANUBE Application Form

Jointly for our common future

Act. 4.2 - Sustainable transport offers



PP5: feasibility study for cycle road connecting Győr and the Bakony ? Balaton destination which connects the EuroVelo cycling track along the Danube and the nearby Bakony territory.

Examples from TRANSDANUBE Application Form

Jointly for our common future

Act. 4.2 - Sustainable transport offers



PP3: Preparation of a feasibility study of a new alternative of river bus service from the municipality Hamuliakovo (20 km away) to the city of Bratislava on the river Danube with a possible connection to the cities of Hainburg and Vienna

Examples from TRANSDANUBE Application Form

Jointly for our common future

Act. 4.2 - Sustainable transport offers



PP8: Feasibility study for ship ? bike connection from tourist terminals to tourist attraction points in the pilot area Danube Delta Biosphere Reservation

PP2: cruise passenger terminal in Hainburg, improving the access from the Danube to Neusiedlersee NP

PP9: Development business plan for multimodal node at Tulcea

IPAPP2: Feasibility study Donji Milanovac (Lepenski Vir). Donji Milanovac is also a point of connection of Danube and bicycle route EuroVelo 6

PP3: Business plan for river bus service Hamuliakovo - Bratislava ? (Hainburg ? Vienna)

Examples from TRANSDANUBE Application Form

Jointly for our common future

Act. 4.2 - Sustainable transport offers

Multimodal

PP6 VIDIN: They sustainable transport offers for better connections between the Danube, Vidin and the touristic attractions in the hinterland will be demonstrated and tested for efficiency through business examples

Examples from TRANSDANUBE Application Form

Jointly for our common future

Act. 4.2: Combined bottom-up and top-down approach

State of the Art => Common vision=> Regional action plans
Marketing strategy & tourism/mobility information system

Top down

**Development of sustainable transport offers (Act. 4.2)
and
Soft mobility offers and packages (Act. 5.2)**

Bottom up

Capitalisation of results of previous projects, experiences, local know-how

Jointly for our common future

WP 4 - Outputs and involved partners

| | Partner | Contributing Partner |
|---|-----------------|--|
| O4.1.1 Common soft mobility vision (Charta for soft mobility in tourism for South East Europe and the Danube Region) | IPA-I PP1 - DCC | All other PPs |
| R4.1.1 Common understanding on sustainable transport development in tourism | IPA-I PP1 - DCC | All other PPs |
| O4.1.2 Soft mobility action plans | ERDF PP2 - BGLD | PP2, PP3, PP4, PP5, IPAPP1, IPAPP2, PP6, PP7, PP8, PP9 + ASPs, OPs |

Jointly for our common future

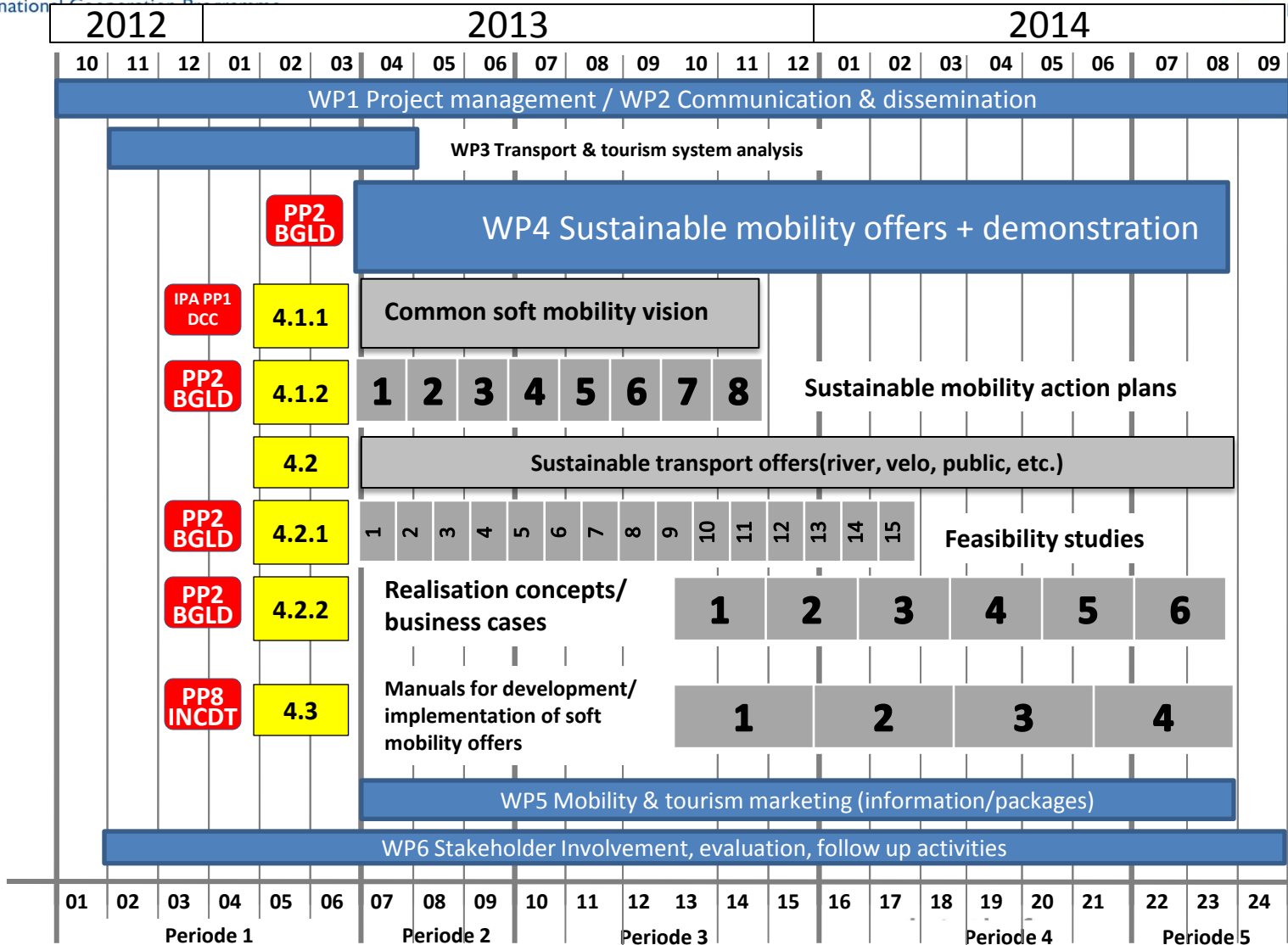
WP 4 - Outputs and involved partners

| | Partner | Contributing Partner |
|---|------------------|--|
| <p>O4.2.1 Feasibility studies for new/improved multimodal transport offers, new shipping services, new/improved bicycle routes/services</p> | ERDF PP2 - BGLD | PP1, PP2, PP3, PP5, PP6, PP7, PP8, PP9, IPAPP1, IPAPP2 |
| <p>O4.2.2 Realisation concepts/business cases for new/improved multimodal transport offers, new/improve bicycle routes/services, new shipping services</p> | ERDF PP2 - BGLD | PP2, PP3, PP4, PP6, PP7, PP8, PP9, IPAPP1, |
| <p>O4.3.1 Manuals for the development of multimodal transport offers, new cycle routes, European long distance cycle routes, river-bus services and other passenger shipping services</p> | ERDF PP8 - INCDT | PP2, PP3, PP7, PP8, PP10, IPAPP1, IPAPP2, all other PPs, ASPs, OPS |

Jointly for our common future



WP 4 - Timetable



| LP - EAA | ERDF PP1 - DTC | ERDF PP2 - BGLD | ERDF PP3 - BSGR | ERDF PP4 - WPRED | ERDF PP5 - BBTDM | ERDF PP6 - Vidin Region | ERDF PP7 - CSDCS | ERDF PP8 - INCDT | ERDF PP9 - SERDA | ERDF PP10 - SKCYCLO | ERDF 20% PP1 - DO | WP Totals of ERDF partners |
|-----------|----------------|-----------------|-----------------|------------------|------------------|-------------------------|------------------|------------------|------------------|---------------------|-------------------|----------------------------|
| 16,329.60 | 4,320.00 | 111,060.00 | 73,840.00 | 32,520.00 | 39,960.00 | 26,528.00 | 17,960.00 | 42,464.00 | 28,016.00 | 12,929.20 | 9,720.00 | 415,646.80 |

| IPA-I PP1 - DCC | IPA-I PP2 - RARIS | WP Totals of IPA partners | WP Totals of ENPI partners |
|-----------------|-------------------|---------------------------|----------------------------|
| 43,570.00 | 61,503.00 | 105,073.00 | 0.00 |

Total: € 520,719.80

Jointly for our common future