

# TRANSDANUBE

## Sustainable Transport & Tourism along the Danube

Project Information, Nov. 2012

# Key Facts

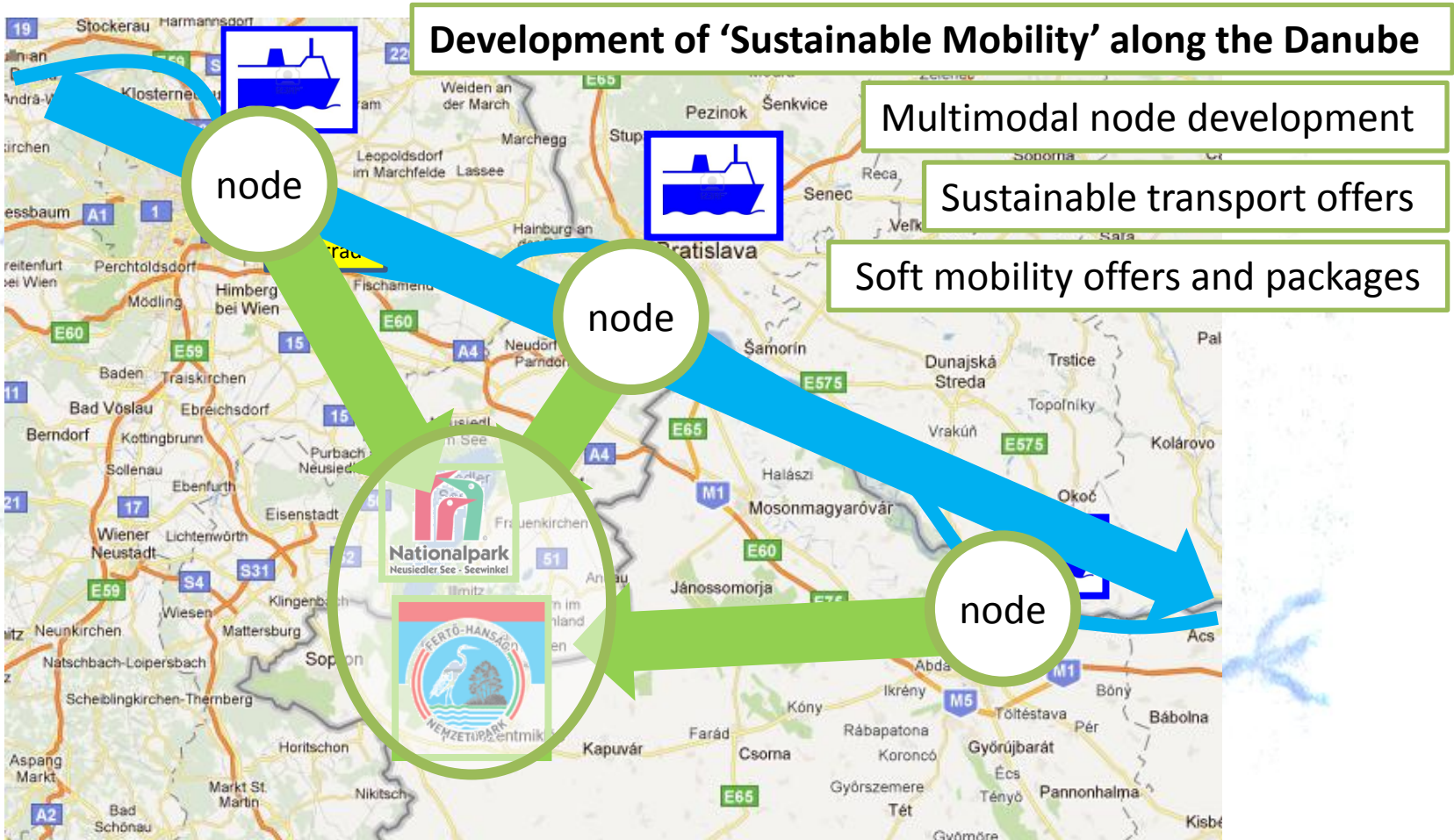
- approved in the 4th call of South-East-Europe
- Lead Partner: Environment Agency Austria
- 14 financing partners,  
35 Associated Partner resp. Observer
- Project duration: Oct. 2012 –Sept. 2014 (2 years)
- Overall budget: ~ 2,37 Mio. Euro
- Co-funding: ~ 1,8 Mio. Euro ERDF,  
~ 0,3 Mio. Euro IPA

# Objectives

Main objective is the **development of ‘Sustainable Mobility’ along the Danube** including train, bus, bike and shipping traffic to facilitate the concept of sustainable tourism in the whole Danube region.

- Improve accessibility of regions along the Danube (along the river as well as from the river to the hinterland) through sustainable mobility offers
- Enhance sustainable mobility in the Danube region
- Increase added value from tourism for regions along the river Danube through mobility & tourism marketing packages
- Raise awareness, knowledge and promotion for sustainable mobility
- Stimulate the shift to environmentally friendly mobility systems
- highlight the benefit of sustainable mobility offers for the regions as well as the realisably of the developed measures through pilot projects

# Strategic Vision



# Main Outputs and Results

- >> Transnational State of the Art report on sustainable mobility in the Danube region (including good practise collection)
- >> Common soft mobility vision
- >> Regional action plans
- >> sustainable transport offers
- >> Digital map, presenting information about existing mobility- and tourism-offers
- >> Soft mobility packages and regional marketing plans

# Main Outputs and Results

- >> Raised awareness of the benefits of sustainable mobility in tourism
- >> Improved cooperation between stakeholders from public authorities, transport operators and tourism
- >> Agreement on follow-up activities
- >> Policy dialogue at regional level as well as with the European Union – Danube Strategy



# Working program



<b>WP3</b>	<b>Transport &amp; tourism system analysis</b>	Development of common methodology	<b>3.1</b>
		State of the Art - Sustainable mobility in tourism	<b>3.2</b>
		Good practice collection	<b>3.3</b>
<b>WP4</b>	<b>Sust. mobility offers + demonstration</b>	Soft mobility vision & regional action plans	<b>4.1</b>
		Sustainable transport offers	<b>4.2</b>
		Guidelines	<b>4.3</b>
<b>WP5</b>	<b>Mobility &amp; tourism marketing (information/packages)</b>	Tourism mobility information	<b>5.1</b>
		Soft mobility offers and packages	<b>5.2</b>
		Marketing strategies and measures	<b>5.3</b>
<b>WP6</b>	<b>Stakeholder Involvement, evaluation, follow up activities</b>	Transnat. cooperation + evaluation concept	<b>6.1</b>
		Regional and national stakeholder involvement, training and awareness raising	<b>6.2</b>
		Transnational and EU-Stakeholder involvement	<b>6.3</b>
		Validation of project outputs/results	<b>6.4</b>
		Follow-up preparation	<b>6.5</b>

# Main dates

>> Kick-Off-Meeting on December 10 – 12 in Vienna!

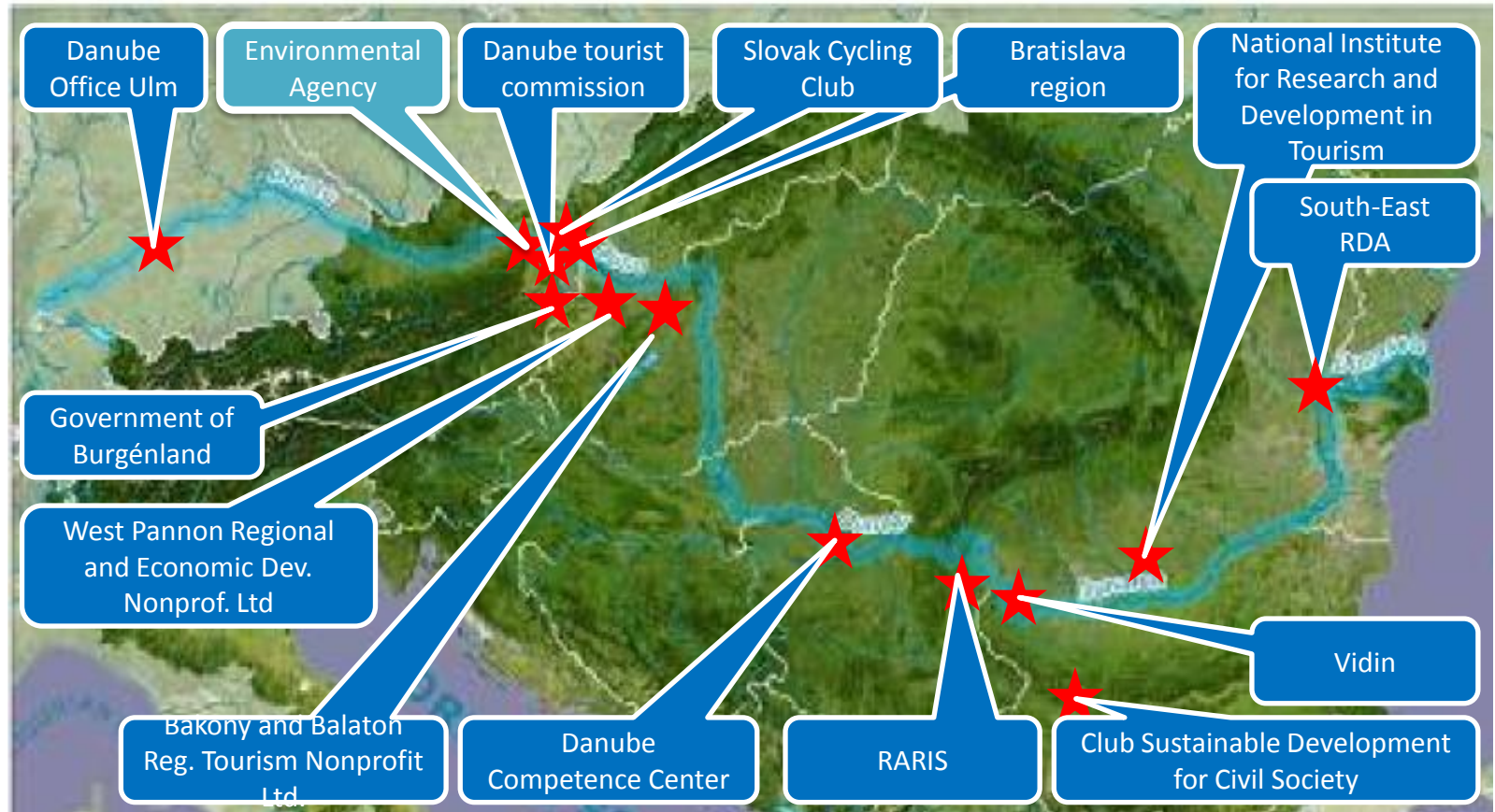
>> Mid-Tem-Conference in autumn 2013 in Bratislava

>> Final Conference in autumn 2014 in Belgrade

>> website with all relevant information is under construction!



# Partnership



<b>LP</b>	Environment Agency Austria	Austria
<b>ERDF PP1</b>	Danube Tourist Commission	Austria
<b>ERDF PP2</b>	Regional government of Burgenland	Austria
<b>ERDF PP3</b>	Bratislava Self-Governing Region Department of Strategy and project management	Slovakia
<b>ERDF PP4</b>	West Pannon Regional and Economic Development Nonprofit Ltd	Hungary
<b>ERDF PP5</b>	Bakony and Balaton Regional Tourism Nonprofit Ltd.	Hungary
<b>ERDF PP6</b>	Regional Administration of Vidin Region	Bulgaria
<b>ERDF PP7</b>	Club Sustainable Development of Civil Society	Bulgaria
<b>ERDF PP8</b>	The National Institute for Research and Development in Tourism	Romania
<b>ERDF PP9</b>	The South-East Regional Development Agency, International Cooperation, PHARE/Romanian Government Projects Implementation, ESF Projects Implementation Dept.	Romania
<b>ERDF PP10</b>	Slovak cycle club	Slovakia
<b>ERDF 20% PP1</b>	Danube Office Ltd.	Germany
<b>IPA-I PP1</b>	Danube Competence Center	Serbia
<b>IPA-I PP2</b>	Regional Agency for development of the Eastern Serbia	Serbia

Austrian Ministry of Agriculture, Forestry, Environment and Water Management	Austria
Federal Ministry for Transport, Innovation and Technology	Austria
Federal Ministry of Economy, Family and Youth, Tourism Department	Austria
Ministry of Economy, Energy and Tourism	Bulgaria
Ministry of Transport, Information Technologies and Communications	Bulgaria
Ministry of Transport and Infrastructure Baden-Württemberg	Germany
Ministry of National Development Office of the Minister of State for Infrastructure	Hungary
Ministry for the Environment, Land and Sea	Italy
Ministry of Regional Development and Tourism	Romania
Ministry of Environment and Forests	Romania
Ministry of Environment, Mining and Spatial Planning of the Republic of Serbia	Serbia
Ministry of Transport	Slovakia

Working Comm. of the Danube Regions	Austria	Donau-Auen National Park	Austria
Municipality Neusiedl am See	Austria	Nationalpark Lake Neusiedl Seewinkel	Austria
Public Transport Association VOR	Austria	Club Friends of Publics Park of Rusenski Lom	Bulgaria
Holiday Club BG LTD	Bulgaria	Directorate of nature park "Rusenski lom"	Bulgaria
City of Vukovar	Croatia	Public Institution Nature Park Kopački rit	Croatia
Local Government of Győr-Moson-Sopron County	Hungary	Fertő-Hanság National Park Directorate	Hungary
Veszprém County Council	Hungary	Middle-Danube-valley Environment and water Management Directorate	Hungary
Hungarian Transport Administration	Hungary	Duna-Ipoly National Park Directorate	Hungary
Hungarian Tourism Private Limited Company, Reg. Marketing Dir. Central Transdanubia	Hungary	DANUBE DELTA BIOSPHERE RESERVE AUTHORITY	Romania
County Council Tulcea	Romania	Iron Gates Natural Park Administration	Romania
Regional Dev. Agency Senec-Pezinok	Slovakia	Départements & Régions cyclables (NGO)	France
Regional Development Agency Komárno	Slovakia		